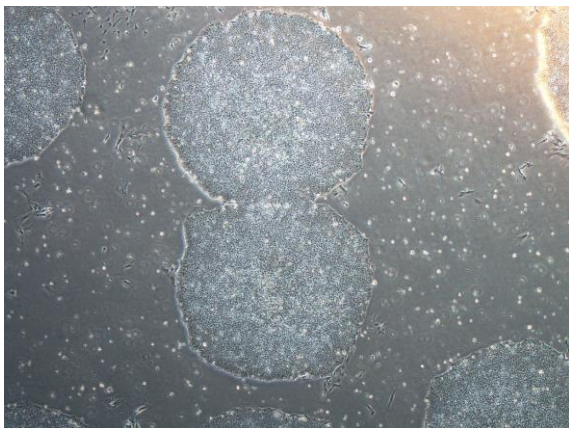
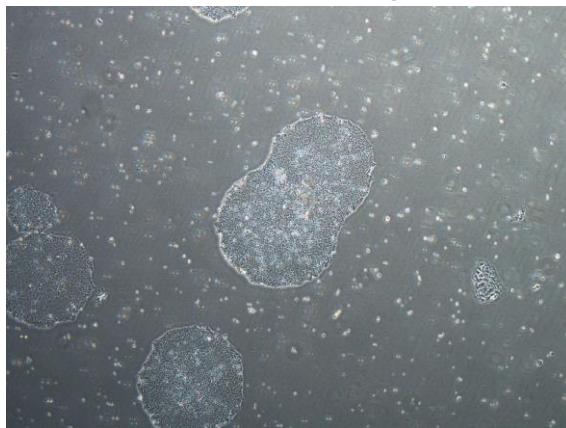


【 CiRA-j-1141 】 Morphology of iPSC colonies

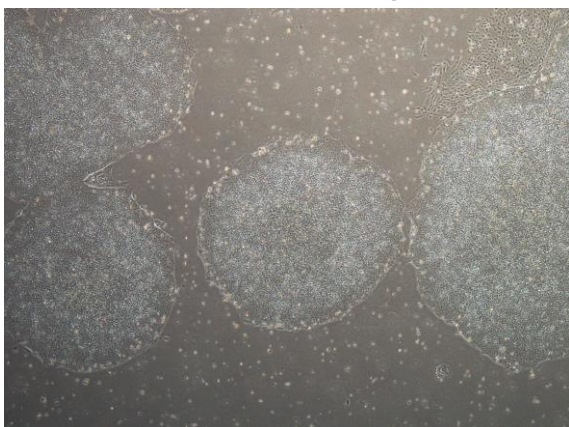
CiRA-j-1141-A: passage-3



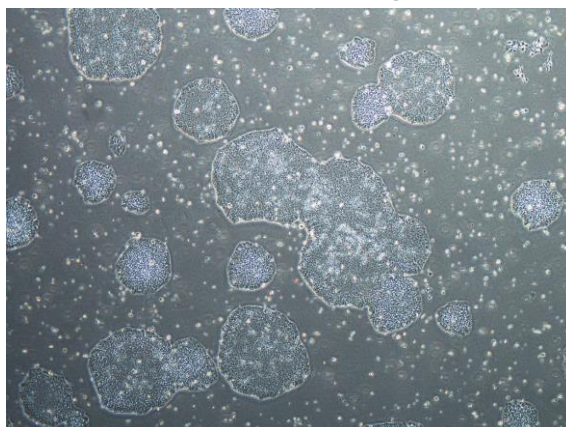
CiRA-j-1141-B: passage-3



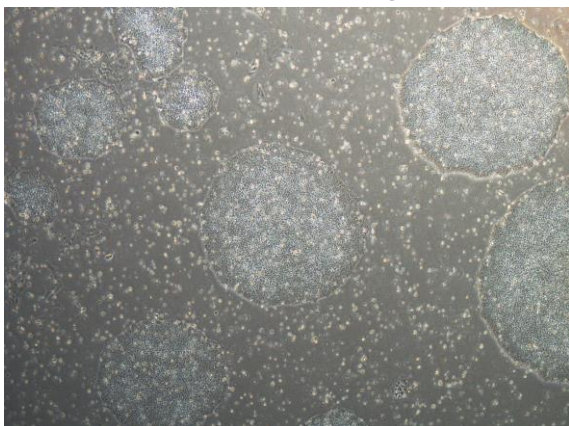
CiRA-j-1141-C: passage-3



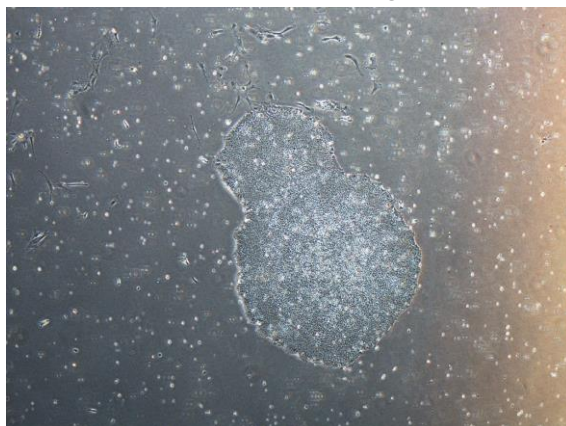
CiRA-j-1141-D: passage-3



CiRA-j-1141-E: passage-3



CiRA-j-1141-F: passage-3



(All images were captured at 4x magnification)